



高精度模具零配件目錄 PRECISION MOULD COMPONENTS CATALOGUE



優質的標誌 信心的保證

目錄 Content



塗層邊鎖 MC 1
PVD-Side Locks



邊鎖 MC 2
Side Locks



頂鎖 MC 3
Top Locks



自潤邊鎖 MC 4
Side Locks
(歐洲規格)



斜導位輔助器 MC 5
Taper Blocks
導柱輔助器
Round Taper Blocks



定位圈 MC 6
Locating Ring
名牌
ID Card



日期鑲件 MC 7
Date Chop
環保章
Recycling Inserts



導柱 MC 8
Guide Pin



拉桿 MC 9
Support Pin



導套 MC 10
Guide Bush



中托司 MC 11
Guide Ejector Bushings



自潤托司 MC 12
Shoulder Bushings
Self-Lubricating



自潤直司 MC 13
Straight Bushings
Self-Lubricating



自潤中托司 MC 14
Guide Ejector Bushings
Self-Lubricating



高溫隔熱板 MC 15
High Temperature
Insulator Plates



拉令 MC 16
Eyebolt

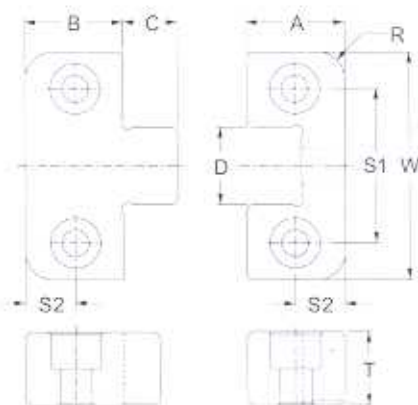
塗層邊鎖 PVD-Side Locks

材料 Material : MALE :2510

FEMALE :H13

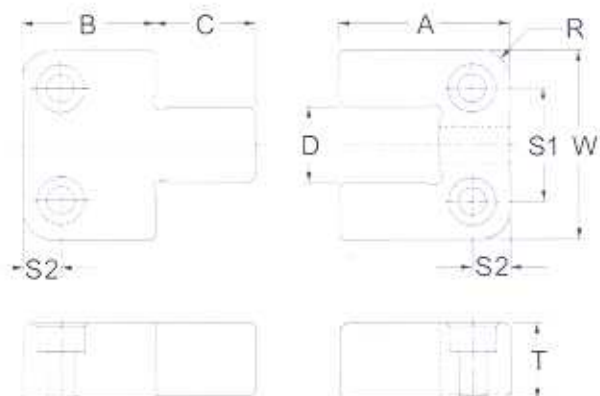
硬度 Hardness : MALE :58-60HRC

FEMALE :46-48HRC



公制規格

型號	W ^{+0 -0.01}	T	A	B	C	D ^{TOTAL 0.01}	R(μ)	S1	S2	胚頭螺絲
CPL-038	38	13	22	22	11	12	5	22	7	M5x12
CPL-050	50	16	21.5	21.5	12	17		34	11	M6x16
CPL-075	75	19	36	36	17	25		50	18	M10x20
CPL-100	100	19	45	45	23	35		70	22	M10x20
CPL-125	125	25	45	45	23	45		84	22	M10x25



美制規格

型號	W ^{+0 -0.0004"}	T	A	B	C	D ^{TOTAL 0.0004"}	R(μ)	S1	S2	美制胚頭螺絲
PPL-100	1.000"	0.375"	1.125"	0.875"	0.53"	0.500"	0.187"	0.500"	0.250"	#10-32x1/2"
PPL-125	1.250"	0.500"	1.125"	0.875"	0.66"	0.500"	0.187"	0.750"	0.250"	#8-32x5/8"
PPL-150	1.500"	0.500"	0.875"	0.875"	0.56"	0.563"	0.187"	1.000"	0.250"	#8-32x5/8"
PPL-200	2.000"	0.500"	1.375"	0.875"	0.66"	0.750"	0.250"	1.375"	0.312"	#10-32x5/8"
PPL-300	3.000"	0.750"	1.875"	0.875"	1.13"	1.250"	0.375"	2.250"	0.375"	1/4"-20x1"
PPL-400	4.000"	1.000"	2.375"	1.375"	1.13"	1.500"	0.500"	3.000"	0.500"	3/8"-16x1-1/4"
PPL-500	5.000"	1.250"	2.875"	1.375"	1.63"	2.000"	0.500"	3.750"	0.625"	1/2"-13x1-1/2"
PPL-600	6.000"	1.500"	2.875"	1.375"	1.63"	2.500"	0.500"	4.750"	0.625"	1/2"-13x1-3/4"

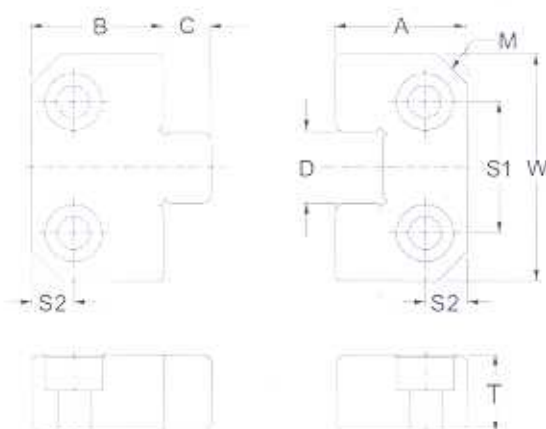


龍記模具配件
LUNG KEE MOULD COMPONENTS

邊鎖
Side Locks
(Precision Alignment)

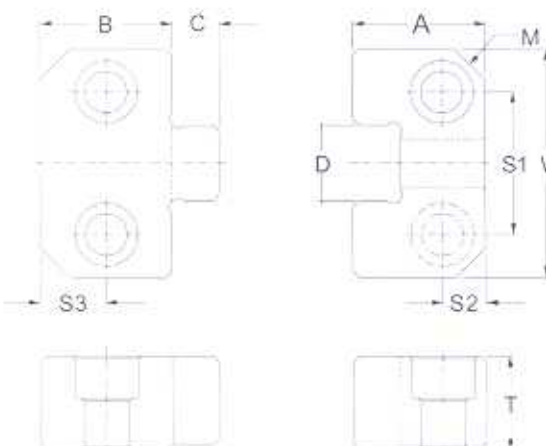
邊鎖 Side Locks

材料 Material : 2510
硬度 Hardness : MALE :50-56HRC
FEMALE :56-62HRC



公制規格

型號	W ⁺⁰ _{-0.01}	T	A	B	C	D ^{TOTAL} _{0.01}	M	S1	S2	胚頭螺絲
PL-038	38	13	22	22	8	12	5	22	7	M5x12
PL-050	50	16	21.5	21.5	8.5	17	5	34	11	M6x16
PL-075	75	19	36	36	14	25	8	50	18	M10x20
PL-100	100	19	45	45	20	35	10	70	22	M10x20
PL-125	125	25	45	45	20	45	10	84	22	M10x25

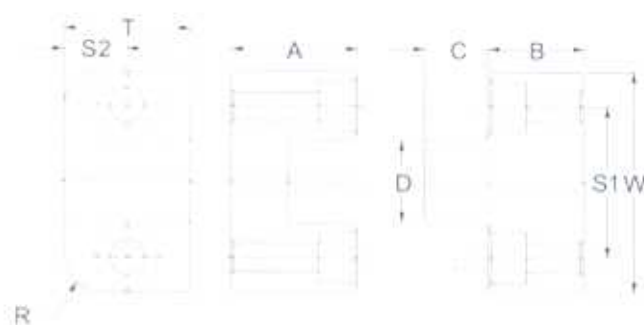


美制規格

型號	W ⁺⁰ _{-0.0004"}	T	A	B	C	D ^{TOTAL} _{0.0004"}	M	S1	S2	S3	美制胚頭螺絲
DPL-150	1.500"	0.620"	0.870"	0.870"	0.31"	0.500"	0.19"	0.938"	0.281"	0.437"	1/4"-20x3/4"
DPL-200	2.000"	0.620"	0.870"	0.870"	0.31"	0.680"	0.19"	1.250"	0.375"	0.437"	1/4"-20x3/4"
DPL-300	3.000"	0.745"	1.370"	1.370"	0.54"	1.000"	0.19"	2.250"	0.688"	0.688"	3/8"-16x1"
DPL-400	4.000"	0.745"	1.870"	1.870"	0.77"	1.375"	0.50"	2.750"	0.875"	0.875"	3/8"-16x1"
DPL-500	5.000"	1.120"	1.870"	1.870"	0.77"	1.750"	0.50"	3.500"	0.875"	0.875"	1/2"-13x1-1/4"

頂鎖 Top Locks

材料 Material : MALE :2510
硬度 Hardness : MALE :54-56HRC
FEMALE :56-58HRC

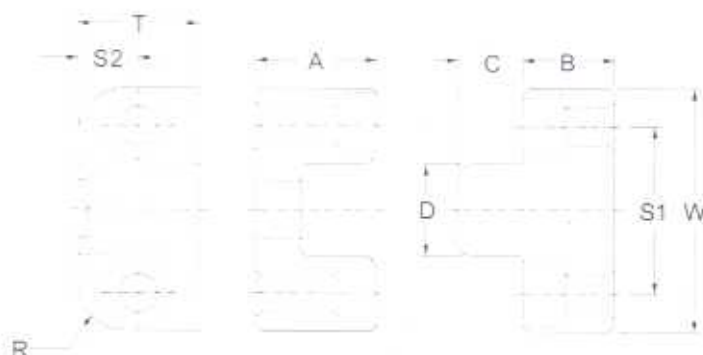


公制規格

型號	W ^{+0 -0.01}	T	A	B	C	D ^{TOTAL 0.01}	R(mm)	S1	S2	MALE 螺絲	FEMALE 螺絲
TL-035	35	20	20	15	10	13	6	24	10	M4x16	M4x20
TL-050	50	25	30	20	15	18	8	34	12.5	M5x20	M5x30
TL-075	75	30	40	20	20	28	10	52	15	M6x20	M6x40

頂鎖 Top Locks

材料 Material : MALE :2510
FEMALE :H13
硬度 Hardness : MALE :58-60HRC
FEMALE :46-48HRC

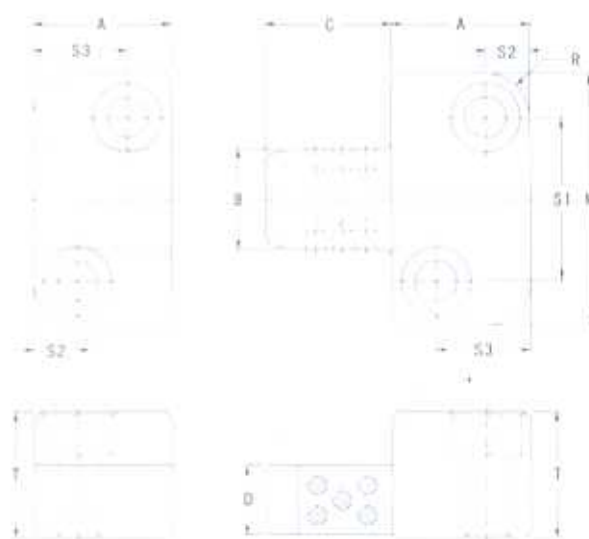
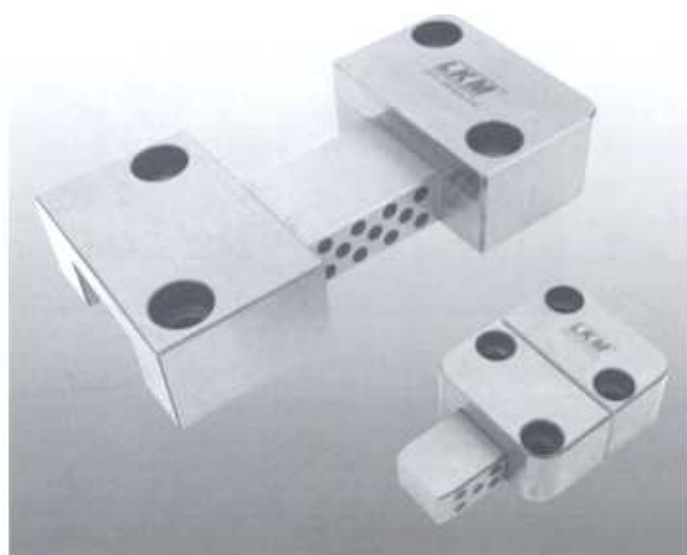


美制規格

型號	W ^{+0 -0.0004"}	T	A	B	C	D ^{TOTAL 0.0004"}	R(mm)	S1	S2	MALE 螺絲	FEMALE 螺絲
PTL-100	1.000"	0.500"	0.500"	0.375"	0.275"	0.375"	0.187"	0.688"	0.250"	#6-32x1 1/2"	#6-32x5/8"
PTL-125	1.250"	0.625"	0.625"	0.500"	0.375"	0.438"	0.250"	0.875"	0.312"	#6-32x1 1/2"	#6-32x5/8"
PTL-150	1.500"	0.875"	0.875"	0.750"	0.500"	0.500"	0.250"	1.000"	0.437"	#8-32x3/4"	#8-32x3/4"
PTL-200	2.000"	1.000"	1.125"	0.750"	0.625"	0.750"	0.375"	1.375"	0.500"	#10-32x3/4"	#10-32x1"
PTL-300	3.000"	1.125"	1.500"	0.750"	0.750"	1.125"	0.500"	2.250"	0.562"	1/4"-20x3/4"	1/4"-20x1-1/2"

自潤邊鎖 Side Locks (歐洲規格)

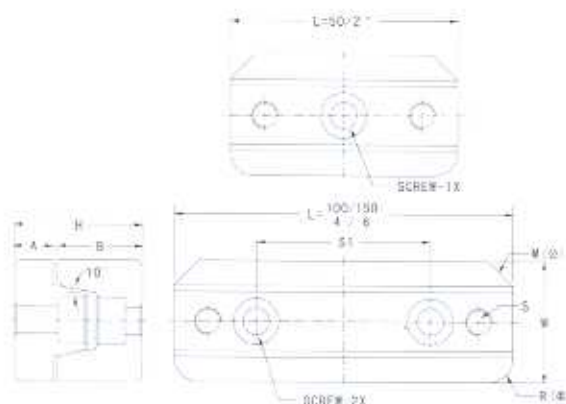
材料 Material : MALE :2510+石墨
硬度 Hardness : MALE :54-56HRC
FEMALE :58-60HRC



型號	W ^{-0.01/-0.02}	T ^{+0/-0.1}	A ^{-0.5/-0.7}	B ^{TOTAL} _{0.01}	C	D	R(圓)	S1	S2	S3	胚頭螺絲
320 350 HPL-22/16x20	40	20	22	16	20	11	6	26	7	15	M6x25
HPL-22/16x40					40						
370 400 HPL-27/20x25	45	22	27	20	25	13	6	31	7	19	M6x25
HPL-27/20x50					50						
500 HPL-36/25x32	50	25	36	25	32	14	8	35	9	27	M6x30
HPL-36/25x63					63						
55 60 HPL-46/32x40	63	32	46	32	40	19	8	45	11	35	M8x35
HPL-46/32x80					80						
70 HPL-56/40x50	85	36	56	40	50	22	10	60	15	40	M10x40
HPL-56/40x100					100						
75 800 HPL-66/50x56	100	40	66	50	56	24	10	74	18	48	M12x45
HPL-66/50x112					112						

斜導位輔助器 Taper Blocks

材料 Material : MALE :2510
硬度 Hardness : MALE :54~56HRC
FEMALE :56~58HRC



公制規格

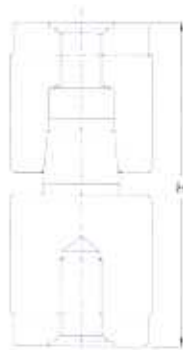
型號	W ^{+0.01} _{-0.01}	L ^{+0.1} _{-0.1}	A ^{+0.01} _{-0.01}	B ^{+0.01} _{-0.01}	S1	H ^{+0.03} ₋₀	M	S	MALE 螺絲	FEMALE 螺絲
TBL-050	25	50	8	17.5	---	25.5	5	M5	M5x16	M5x12
TBL-100	30	100	10	22	60	32	5	M6	M6x20	M6x16
TBL-150	40	150	13	25	100	38	5	M8	M8x25	M8x16

美制規格

型號	W ^{+0.0005"} _{-0.0010"}	L ^{+0.01"} _{-0.03"}	A ^{+0.001"} _{-0.001"}	B ^{+0.001"} _{-0.001"}	S1	H ^{+0.0012"} ₋₀	R(吋)	S	MALE 螺絲	FEMALE 螺絲
PBL-200	1.000"	2.000"	0.312"	0.690"	---	1.002"	0.250"	1/4"-20	#10-24x5/8"	#10-24x1/2"
PBL-400	1.250"	4.000"	0.375"	0.870"	2.500"	1.245"	0.312"	1/4"-20	1/4"-20x3/4"	1/4"-20x1/2"
PBL-600	1.500"	6.000"	0.500"	1.000"	4.000"	1.500"	0.375"	5/16"-18	5/16"-18x1"	5/16"-18x5/8"

導柱輔助器 Round Taper Blocks

材料 Material : SUJ2
硬度 Hardness : 58~60HRC



公制規格

型號	D ^{-0.01} _{-0.03}	L ^{+0.2} _{+0.1}	d	a	H ^{+0.03} ₋₀	S
TPN-013	13	14	7	5°	30.30	M4
TPN-016	16	14	10		30.30	M5
TPN-020	20	19	13		40.30	M6
TPN-025	25	24	16		50.30	M8
TPN-030	30	29	20		60.30	M10
TPN-032	32	29	20		60.30	M10
TPN-035	35	34	24		70.30	M12

美制規格

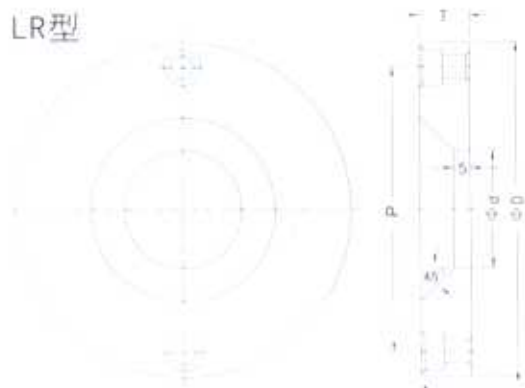
型號	D ^{-0.00005"} _{-0.00005"}	L ^{+0.010"} _{-0.005"}	d	a	H ^{+0.015"} _{-0.008"}	S
PRL-051	0.500"	0.855"	0.312"	10°	1.750"	#10-24
PRL-071	0.750"	0.855"	0.500"		1.750"	1/4"-20
PRL-101	1.000"	0.855"	0.625"		1.750"	1/4"-20
PRL-151	1.500"	1.375"	1.000"		2.250"	5/16"-18
PRL-201	2.000"	1.375"	1.500"		2.250"	5/16"-18

定位圈 Locating Ring

材料 Material : S45C

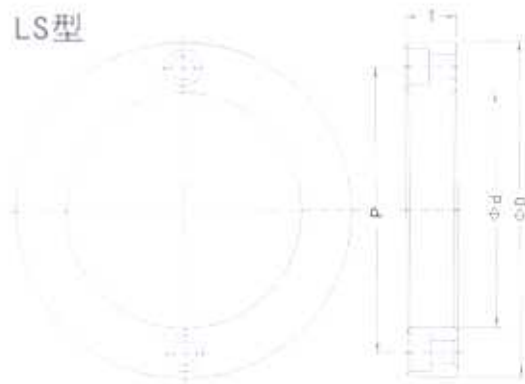


LR型

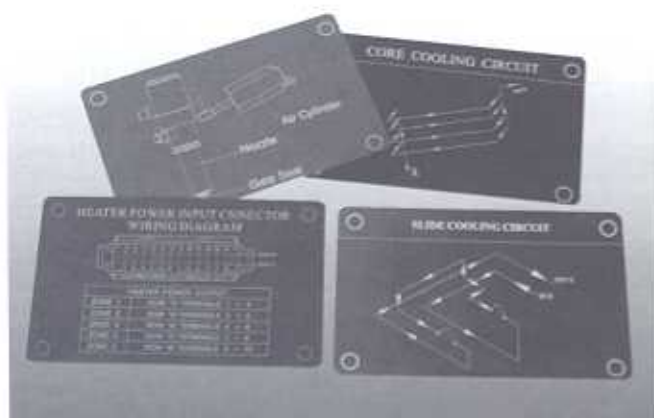


型號	D ^{+0.1} _{-0.3}	T _{±0.2}	d ^{+0.2} ₋₀	P _{±0.2}	螺絲規格
LR-100-36	100	15	36	85	M6
LR-100-50			50		
LR-120-36	120		36		
LR-120-50			50		
LS-100-15	100	15	70	85	M6
LS-100-20		20			
LS-120-15	120	15	90	105	
LS-120-20		20			
LS-150-15	150	15	110	130	M8
LS-150-20		20			

LS型



名牌 ID Card



ID Card 是以激光把需要的資料或圖型雕刻於鋁金屬片表面，可應用於模具或機床上作名牌使用。

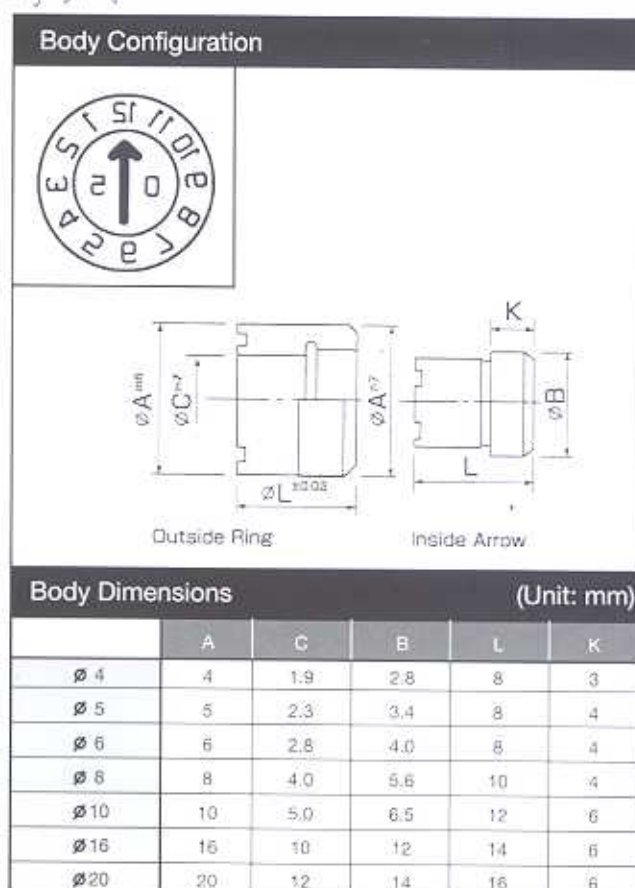
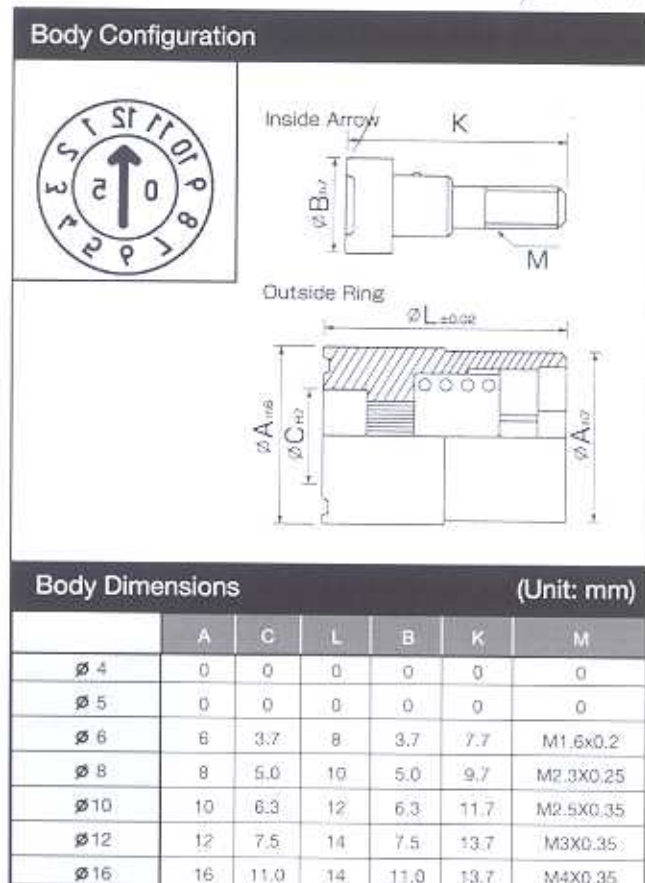
材料：鋁金屬

尺寸：0.5x54x85mm

顏色：藍色

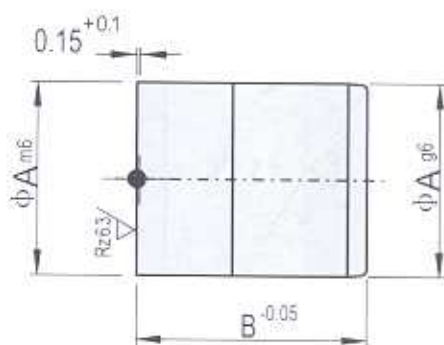
日本-日期鑲件 Date Chop

Code 不 新到



環保章 Recycling Inserts

配合環保再造，塑膠產品必須標誌識別編號，以便利於回收分類。龍記亦本著環保製造，你我參予精神，推出標準環保章，以最優惠的價格，協助客戶以最低成本和最簡單的加工方法，建立良好的公司形像及負起應有的社會責任。

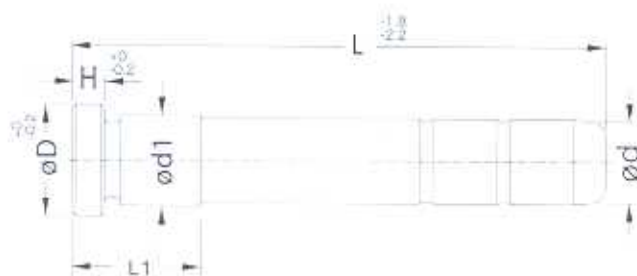


REF.	A	B
IM-0410XX	4	10
IM-0510XX	5	
IM-0610XX	6	
IM-0812XX	8	
IM-1012XX	10	12
IM-1212XX	12	
IM-1616XX	16	16
IM-2016XX	20	



導柱 Guide Pin

材料 Material : SUJ2
硬度 Hardness : 60±2HRC



尺寸公差 Dimension

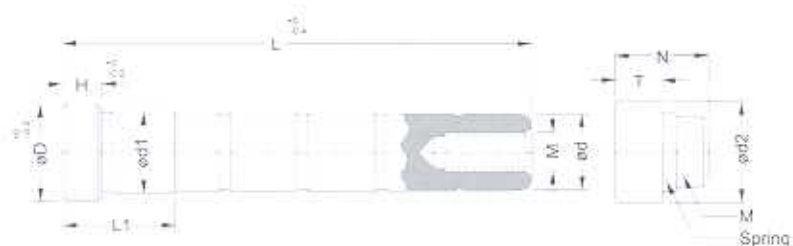
型號 Nom. Size	d		d1		D	H
	直徑 Size	公差 Tolerance	直徑 Size	公差 Tolerance		
12	12	-0.015	12	+0.020	17	6
12	16	-0.027	16	+0.010	21	
20	20	-0.020 -0.033	20	+0.025 +0.015	25	8
25	25		25		30	
30	30	-0.025 -0.040	30	+0.030 +0.020	35	10
35	35		35		40	
40	40		40		45	
50	50		50		55	
60	60	-0.030 -0.049	60	+0.035 +0.020	66	15
70	70		70		76	
80	80	-0.035 -0.055	80	+0.035 +0.020	86	20
90	90		90		96	
100	100		100		106	

導柱尺寸總覽表 Specification of Guide Pin

Od L	Ø12	Ø16	Ø20	Ø25	Ø30	Ø35	Ø40	Ø50	Ø60	Ø70	Ø80
50	19	19	19	19							
55	19	19	19	19							
60	19	19	19	24	19						
65	19	19	19	24	19						
70	19	19	19	24	24	34					
75	19	19	19	24	24	34					
80	19	19	19	24	24	34	34				
85	19	19	19	24	24	34					
90	19	19	19	24	29	34	34				
95	19	19	19	24	29	34					
100	19	24	19	24	29	39	34				
110	24	24	24	24	29	39	34				
120	24	24	24	24	29	39	39	59			
130	24	24	24	24	29	39	39	59			
140	24	24	24	29	29	39	39	59			
150		24	34	29	29	49	39	59			
160		24	34	34	29	49	39	59			
170		24	34	34	39	49	39				
180		24	34	34	39	49	39	59	79		
190		24	34	34	39	49	39				
200		24	34	34	39	49	49	59	79		
210		29	34	34	39	49	49				
220		29	34	34	49	49	49	59	79		
230		29	34	34	49	49	49				
240		29	34	34	49	49	49	59	79		
250		29	34	34	49	59	59	59	79		
260			39	34	49	59	59	69	79		
270			39	34	49	59	59				
280			39	34	49	59	59	69	79		
290			39	34	49	59	59				
300			39	34	49	59	59	69	99		
320				49	49	59	59	79	99		
340				49	49	59	59	79	99		
350				49	49	59	59	79	99	99	
360					49	59	59	79	99	99	
380					49	59	59	79	99	99	
400					49	59	59	79	99	99	99
420						59	59	79	99	99	
450						59	59	79	99	99	99
480						69	69	79	99	99	
500						69	69	79	99	99	99
520								79	99	99	
550								79	99	99	99
580								79	99	99	
600								79	99	99	99
620									99	99	
650									99	99	99
680									99	99	
700									99	99	99
720										99	
750										99	99
780										99	
800										99	99

拉桿 Support Pin

材料 Material : SUJ2
硬度 Hardness : 60±2HRC



拉桿尺寸總覽表 Specification of Support Pin

Od	Ø16	Ø20	Ø25	Ø30	Ø35	Ø40	Ø50	Ø60	Ø70	Ø80
L	L1									
100	●	●								
110	●	●								
120	●	●								
130	●	●	●	●						
140	●	●	●	●						
150	●	●	●	●						
160	●	●	●	●	●					
170	●	●	●	●	●	●				
180	●	●	●	●	●	●	●			
190	●	●	●	●	●	●	●			
200	●	●	●	●	●	●	●			
210	●	●	●	●	●	●	●			
220	●	●	●	●	●	●	●			
230	●	●	●	●	●	●	●			
240	●	●	●	●	●	●	●			
250	●	●	●	●	●	●	●			
260	●	●	●	●	●	●	●			
270	●	●	●	●	●	●	●			
280	●	●	●	●	●	●	●	●		
290	●	●	●	●	●	●	●	●		
300	●	●	●	●	●	●	●	●	●	
310	●	●	●	●	●	●	●	●	●	
320	●	●	●	●	●	●	●	●	●	
330	●	●	●	●	●	●	●	●	●	
340	●	●	●	●	●	●	●	●	●	
350	●	●	●	●	●	●	●	●	●	
360	●	●	●	●	●	●	●	●	●	
370	●	●	●	●	●	●	●	●	●	
380	●	●	●	●	●	●	●	●	●	
390	●	●	●	●	●	●	●	●	●	
400	●	●	●	●	●	●	●	●	●	
410	●	●	●	●	●	●	●	●	●	
420	●	●	●	●	●	●	●	●	●	
430	●	●	●	●	●	●	●	●	●	
440	●	●	●	●	●	●	●	●	●	
450	●	●	●	●	●	●	●	●	●	
460	●	●	●	●	●	●	●	●	●	
480	●	●	●	●	●	●	●	●	●	
500	●	●	●	●	●	●	●	●	●	
520	●	●	●	●	●	●	●	●	●	
540	●	●	●	●	●	●	●	●	●	
550	●	●	●	●	●	●	●	●	●	
560	●	●	●	●	●	●	●	●	●	
580	●	●	●	●	●	●	●	●	●	
600	●	●	●	●	●	●	●	●	●	
620	●	●	●	●	●	●	●	●	●	
650	●	●	●	●	●	●	●	●	●	
680	●	●	●	●	●	●	●	●	●	
700	●	●	●	●	●	●	●	●	●	
720	●	●	●	●	●	●	●	●	●	
750	●	●	●	●	●	●	●	●	●	
780	●	●	●	●	●	●	●	●	●	
800	●	●	●	●	●	●	●	●	●	

尺寸公差 Dimension											
型號 Nom. Size	d		d1		D	H	L1	T	d2	N	M
	直徑 Size	公差 Tolerance	直徑 Size	公差 Tolerance							
16	16	-0.015 -0.027	16	+0.020 +0.010	21	8	24	8	20	21	M10x25
20	20	-0.020 -0.033	20	+0.025 +0.015	25	10	29	10	26	26	M12x30
25	25		25		30	12	34	12	31	30	M14x35
30	30	-0.025 -0.040	30	+0.030 +0.020	35	14	44	14	38	34	M16x45
35	35		35		40	16	49	16	43	36	
40	40	-0.030 -0.049	40	+0.035 +0.020	45	18	59	18	48	38	M20x55
50	50		50		55	20	★	20	60	40	
60	60	-0.035 -0.055	60	+0.035 +0.020	66	25	★	25	70	50	M24x70
70	70		70		76		★		80		
80	80	-0.035 -0.055	80	+0.035 +0.020	86	30	★	30	90		
90	90		90		96		★		100	60	
100	100	-0.035 -0.055	100	+0.035 +0.020	106	30	★	30	110		

★ 緊位長度由客戶提供

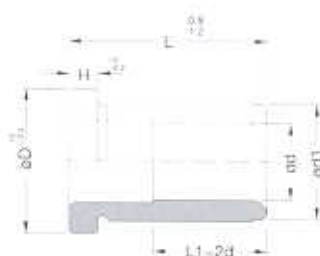
導套 Guide Bush

材料 Material : SUJ2
硬度 Hardness : 60±2HRC



托司
Shoulder Guide Bush

直司
Straight Guide Bush



尺寸公差 Dimension						
型號 Norm. Size	d 直徑 Size	公差 Tolerance	d1 直徑 Size	公差 Tolerance	D	H
16	16	+0.018 +0.007	25	+0.020 +0.010	30	6
20	20	+0.020 +0.008	30		35	8
25	25		35		40	
30	30		42	+0.025 +0.010	47	10
35	35	+0.025 +0.008	48		54	
40	40		55		61	
50	50	+0.035 +0.015	70	+0.035 +0.015	76	12
60	60		80		86	15
70	70		90		96	
80	80		105		111	20
90	90		115		121	
100	100		130		136	

導柱尺寸總覽表 Specification of Guide Bush											
od L	Ø16	Ø20	Ø25	Ø30	Ø35	Ø40	Ø50	Ø60	Ø70	Ø80	
15	★●	★●									
20	★●	★●	★●	★●	●						
25	★●	★●	★●	★●	★●	★					
30	★●	★●	★●	★●	★●	★●	★				
35	★●	★●	★●	★●	★●	★●	★●				
40	★●	★●	★●	★●	★●	★●	★●	★●	●		
50	★●	★●	★●	★●	★●	★●	★●	★●	●	●	
60	★●	★●	★●	★●	★●	★●	★●	★●	●	●	●
70	★	★	★●	★●	★●	★●	★●	★●	●	●	●
80	★	★	★	★●	★●	★●	★●	★●	★	●	●
90	★	★	★	★	★●	★●	★●	★●	★		
100		★	★	★	★●	★●	★●	★●	★	★	
110		★	★	★	★	★	★●	★●	★	★	
120		★	★	★	★	★	★	★●	★	★	
130			★	★	★	★	★	★●	★	★	
140				★	★	★	★	★	★	★	
150				★	★	★	★	★	★●	★	
160					★	★	★	★	★	★	
170					★	★	★	★	★	★●	
180					★	★	★	★	★	★	
190					★	★	★	★	★	★	
200					★	★	★	★	★	★	
220								★	★	★	
250								★	★	★	

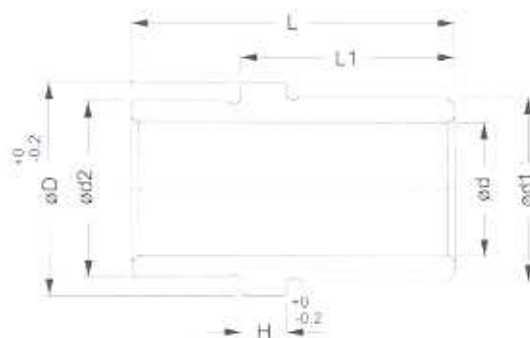
★ 托司 - 庫存 Shoulder Guide Bush - Stock
● 直司 - 庫存 Straight Guide Bush - Stock

導套 Guide Bush

材料 Material : SUJ2
硬度 Hardness : 60±2HRC



中托司
Ejector
Guide Bush



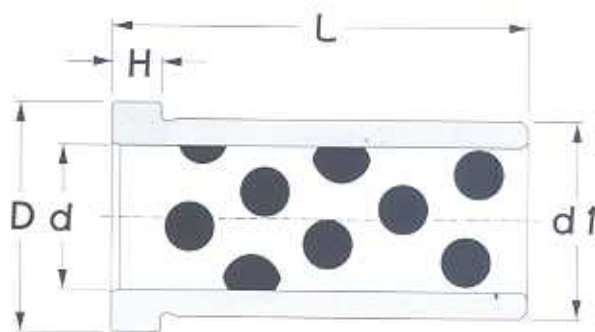
尺寸公差 Dimension							中托司尺寸總覽表							
型號 Nom. Size	d		d1		d2	D	H	L / L1	25/13	30/18	40/23	50/28	60/33	80/43
	直徑 Size	公差 Tolerance	直徑 Size	公差 Tolerance				d						
12	12	+0.018 +0.007	20	+0.020 +0.010	-0.04 -0.06	25	6	12	●	●				
16	16		25			30		16	●	●	●			
20	20	30	35			8	20		●	●	●			
25	25	35	40				25		●	●	●			
30	30	+0.020 +0.008	42	+0.025 +0.010		47	10	30			●	●		
35	35		48			54		35			●	●		
40	40		55	+0.035 +0.015		61		40				●	●	●
50	50	70	76			12	50					●	●	

H 托位高度可選4mm規格

● 庫存

自潤托司 Shoulder Bushings Self-Lubricating

材料 Material : 650#+石墨
硬度 Hardness : >210HB



公制規格 採購編號: MBAS-d-L-Qty

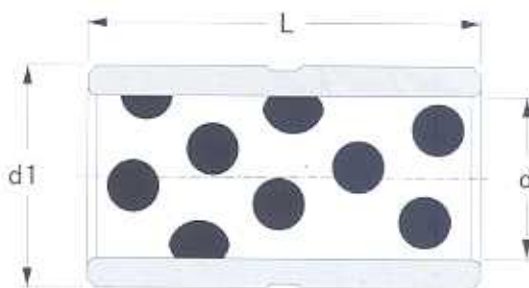
型號	dH7	d1m6	D ⁺⁰ _{-0.2}	H ⁺⁰ _{-0.2}	d \ L	35	40	50	60	70	80	90	100	110	120	130	140	150	160	170	180	200	250
20	20	30	35	8	20	●	●	●	●	●	●	●	●										
25	25	35	40		25	●	●	●	●	●	●	●	●										
30	30	42	47		30		●	●	●	●	●	●	●	●	●								
35	35	48	54	10	35			●	●	●	●	●	●	●	●								
40	40	55	61		40				●	●	●	●	●	●	●	●	●						
50	50	70	76		50					●	●	●	●	●	●	●	●	●	●	●	●	●	●
60	60	80	86	15	60						●	●	●	●	●	●	●	●	●	●	●	●	●
70	70	90	96		70							●	●	●	●	●	●	●	●	●	●	●	●
80	80	105	111		80								●	●	●	●	●	●	●	●	●	●	●

美制規格 採購編號: UBAS-d-L-Qty

型號	d ^{+0.0005} ₀ "	d1 ^{+0.0005} ₀ "	D ⁺⁰ _{-0.01} "	H ⁺⁰ _{-0.01} "	d \ L	7/8"	1-3/8"	1-7/8"	2-3/8"	2-7/8"	3-3/8"	3-7/8"	4-3/8"	4-7/8"	5-7/8"
3/4"	0.7505"	1.1255"	1.30"	0.187"	3/4"	●	●	●	●	●	●	●	●	●	●
7/8"	0.8755"	1.2505"	1.43"		7/8"	●	●	●	●	●	●	●	●	●	●
1"	1.0005"	1.3755"	1.55"		1"	●	●	●	●	●	●	●	●	●	●
1-1/4"	1.2505"	1.6255"	1.80"		1-1/4"	●	●	●	●	●	●	●	●	●	●
1-1/2"	1.5005"	2.0005"	2.18"		1-1/2"	●	●	●	●	●	●	●	●	●	●
2"	2.0005"	2.5005"	2.68"		2"		●	●	●	●	●	●	●	●	●
2-1/2"	2.5005"	3.2505"	3.43"		2-1/2"		●	●	●	●	●	●	●	●	●
3"	3.0005"	3.7505"	3.99"	0.500"	3"							●		●	●

自潤直司 Straight Bushings Self-Lubricating

材料 Material : 650#+石墨
硬度 Hardness : >210HB



公制規格 採購編號: MBBS-d-L-Qty

型號	dH7	d1m6
20	20	30
25	25	35
30	30	42
35	35	48
40	40	55
50	50	70
60	60	80
70	70	90
80	80	105

d \ L	20	25	30	35	40	50	60	70	80
20	●	●	●		●				
25	●	●	●			●			
30		●	●	●			●		
35			●	●	●			●	
40				●	●	●			●
50					●	●	●		
60					●	●	●		
70						●	●	●	
80							●	●	●

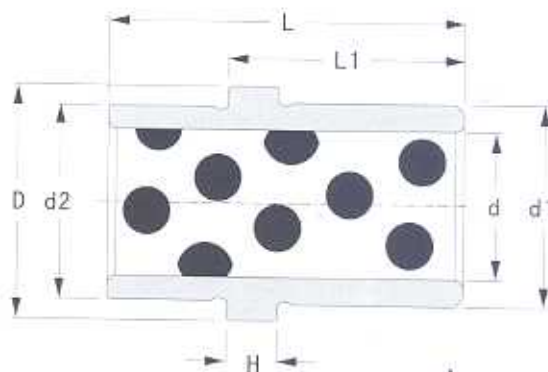
美制規格 採購編號: UBBS-d-L-Qty

型號	d ^{+0.0005} ₋₀ "	d1 ^{+0.0005} ₋₀ "
3/4"	0.7505"	1.1255"
7/8"	0.8755"	1.2505"
1"	1.0005"	1.3755"
1-1/4"	1.2505"	1.6255"
1-1/2"	1.5005"	2.0005"
2"	2.005"	2.5005"
2-1/2"	2.5005"	3.2505"
3"	3.0005"	3.7505"

d \ L	7/8"	1-1/4"	1-3/8"	1-1/2"	1-3/4"	1-7/8"	2"	2-1/2"	3"	3-7/8"	4-7/8"
3/4"	●		●	●							
7/8"		●		●							
1"		●	●	●	●		●		●		
1-1/4"		●	●	●	●	●	●		●		
1-1/2"		●	●	●	●	●	●		●		
2"		●		●			●	●	●	●	
2-1/2"				●			●		●		●
3"							●	●	●	●	●

自潤中托司 Guide Ejector Bushings Self-Lubricating

材料 Material : 650#+石墨
硬度 Hardness : >210HB



公制規格 採購編號: MBES-d-L/L1-Qty

型號	d _{H7}	d1 _{m6}	d2 _{+0.04/-0.05}	D _{+0/-0.2}	H _{+0/-0.1}	d \ L/L1	25/13	30/18	40/23	50/28	60/33
12	12	20	25	25	4	12	●	●			
16	16	25	30	30		16	●	●			
20	20	30	35	35		20		●	●		
25	25	35	40	40		25		●	●	●	
30	30	42	47	47		30			●	●	●
35	35	48	54	54		35				●	●
40	40	55	61	61		40				●	●
50	50	70	76	76		50				●	●

美制規格 採購編號: UBES-d-L/L1-Qty

型號	d _{+0.0005/-0}	d1 _{+0.0005/-0}	d2 _{+0/-0.001}	D _{+0/-0.005}	H _{+0/-0.004}	d \ L/L1	1-1/2" / 1"	1-3/4" / 1-1/8"	2" / 1-5/8"	2-1/4" / 1-5/8"	2-1/2" / 1-7/8"
3/4"	0.751"	1.1255"	1.124"	1.30"	0.187"	3/4"	●				
7/8"	0.876"	1.2505"	1.249"	1.43"		7/8"	●				
1"	1.001"	1.3755"	1.374"	1.55"		1"		●	●		
1-1/4"	1.251"	1.6255"	1.624"	1.80"		1-1/4"		●			●
1-1/2"	1.501"	2.0005"	1.999"	2.18"		1-1/2"		●			●
2"	2.001"	2.5005"	2.499"	2.68"		2"				●	

歐洲規格

型號	L	d _{H7}	d1 _{m6}	d2 _{e7}	D _{+0 -0.2}	H _{+0 -0.05}
ASC-13W/17/14	17	14	20		25	6
ASC-13W/17/15		15				
ASC-13W/22/18	22	18	26		31	
ASC-13W/22/20		20				
ASC-13W/27/22	27	22	30		35	
ASC-13W/27/24		24				
ASC-13W/36/30	36	30	42		47	
ASC-13W/36/32		32				

高溫隔熱板（纖維） High Temperature Insulator Plates

美國進口

工作溫度550°F以下

厚度: 1/4" 中心有孔			厚度: 1/2" 中心有孔		
訂購編號	闊度(吋)	長度(吋)	訂購編號	闊度(吋)	長度(吋)
IN-88-2H	7.875	7.875	IN-88-4H	7.875	7.875
IN-812-2H	7.875	11.875	IN-812-4H	7.875	11.875
IN-108-2H	9.875	8.000	IN-108-4H	9.875	8.000
IN-1012-2H	9.875	11.875	IN-1012-4H	9.875	11.875
IN-1016-2H	9.875	16.000	IN-1016-4H	9.875	16.000
IN-1112-2H	10.875	12.000	IN-1112-4H	10.875	12.000
IN-1114-2H	10.875	14.000	IN-1114-4H	10.875	14.000
IN-1118-2H	10.875	18.000	IN-1118-4H	10.875	18.000
IN-1212-2H	11.875	12.000	IN-1212-4H	11.875	12.000
IN-1215-2H	11.875	15.000	IN-1215-4H	11.875	15.000
IN-1220-2H	11.875	20.000	IN-1220-4H	11.875	20.000
IN-1315-2H	13.375	15.000	IN-1315-4H	13.375	15.000
IN-1318-2H	13.375	18.000	IN-1318-4H	13.375	18.000
IN-1321-2H	13.375	20.750	IN-1321-4H	13.375	20.750
IN-1326-2H	13.375	26.000	IN-1326-4H	13.375	26.000
IN-1518-2H	14.875	17.875	IN-1518-4H	14.875	17.875
IN-1616-2H	15.875	16.000	IN-1616-4H	15.875	16.000
IN-1620-2H	15.875	20.000	IN-1620-4H	15.875	20.000
IN-1623-2H	15.875	23.500	IN-1623-4H	15.875	23.500
IN-1629-2H	15.875	29.500	IN-1629-4H	15.875	29.500
IN-1818-2H	17.875	18.000	IN-1818-4H	17.875	18.000
IN-1820-2H	17.875	20.000	IN-1820-4H	17.875	20.000
IN-1924-2H	19.500	23.750	IN-1924-4H	19.500	23.750

厚度: 1/4" 沒有孔			厚度: 1/2" 沒有孔		
訂購編號	闊度(吋)	長度(吋)	訂購編號	闊度(吋)	長度(吋)
IN-88-2	7.875	7.875	IN-88-4	7.875	7.875
IN-812-2	7.875	11.875	IN-812-4	7.875	11.875
IN-108-2	9.875	8.000	IN-108-4	9.875	8.000
IN-1012-2	9.875	11.875	IN-1012-4	9.875	11.875
IN-1016-2	9.875	16.000	IN-1016-4	9.875	16.000
IN-1112-2	10.875	12.000	IN-1112-4	10.875	12.000
IN-1114-2	10.875	14.000	IN-1114-4	10.875	14.000
IN-1118-2	10.875	18.000	IN-1118-4	10.875	18.000
IN-1212-2	11.875	12.000	IN-1212-4	11.875	12.000
IN-1215-2	11.875	15.000	IN-1215-4	11.875	15.000
IN-1220-2	11.875	20.000	IN-1220-4	11.875	20.000
IN-1315-2	13.375	15.000	IN-1315-4	13.375	15.000
IN-1318-2	13.375	18.000	IN-1318-4	13.375	18.000
IN-1321-2	13.375	20.750	IN-1321-4	13.375	20.750
IN-1326-2	13.375	26.000	IN-1326-4	13.375	26.000
IN-1518-2	14.875	17.875	IN-1518-4	14.875	17.875
IN-1616-2	15.875	16.000	IN-1616-4	15.875	16.000
IN-1620-2	15.875	20.000	IN-1620-4	15.875	20.000
IN-1623-2	15.875	23.500	IN-1623-4	15.875	23.500
IN-1629-2	15.875	29.500	IN-1629-4	15.875	29.500
IN-1818-2	17.875	18.000	IN-1818-4	17.875	18.000
IN-1820-2	17.875	20.000	IN-1820-4	17.875	20.000
IN-1924-2	19.500	23.750	IN-1924-4	19.500	23.750

厚度: 1/4" 標準板件			厚度: 1/2" 標準板件			公差	
訂購編號	闊度(吋)	長度(吋)	訂購編號	闊度(吋)	長度(吋)	闊度	長度
IN-1836-2	18.000	36.000	IN-1836-4	18.000	36.000	-0.010	-0.025
IN-2436-2	24.000	36.000	IN-2436-4	24.000	36.000	-0.010	-0.025
IN-3636-2	36.000	36.000	IN-3636-4	36.000	36.000	-0.010	-0.025

*備註: 可接受特別訂造最大尺寸:
闊48" x 長96" (厚度1"以上)

拉令 Eyebolt (日本進口)



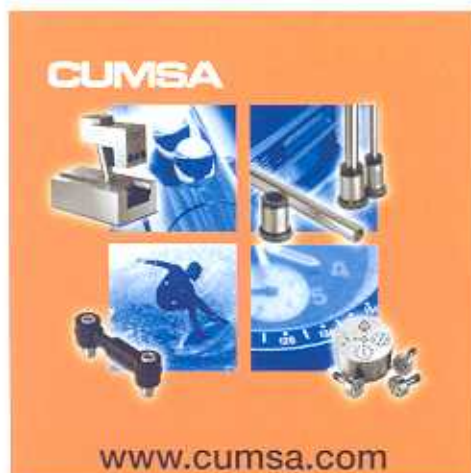
尺寸 / Dimension
公制
M12
M16
M20
M24
M30
M36
M42
M48
M64
M80
M90

尺寸 / Dimension
英制
3/8"
1/2"
5/8"
3/4"
1"
1-1/4"
1-1/2"
2"
2-1/2"
3"



龍記模具配件
LUNG KEE MOULD COMPONENTS

代理進口模具零件



五金模具配件





龍 記 集 團
LUNG KEE GROUP



總辦事處 (Head Office)

龍記五金有限公司

LUNG KEE METAL LTD

香港九龍觀塘興業街四號長江電子工業大廈三樓
2/F, Cheung Kong Electronic Building, 4 Hing Yip Street
Kwun Tong, Kowloon, Hong Kong

電話 Tel : (852) 2342 2248, 2341 2321

傳真 Fax : (852) 2343 0990, 2951 6199, 2341 8544

電子郵件 E-mail : lkmsales@lkm.com.hk, steelsales@lkm.com.hk, lkmheatlock@lkm.com.hk

河源龍記金屬制品有限公司 (Heyuan Factory, PRC)
HEYUAN LUNG KEE METAL PRODUCTS CO LTD

中國廣東省河源市高埔工業區 郵編 : 517000
Gaopu Ind. Zone, Heyuan City, Guangdong, China 517000
電話 Tel : (86) 0762-321 0502 傳真 Fax : (86) 0762-321 0501

東莞龍記五金制品有限公司 (Guangdong Factory, PRC)
DONGGUAN LUNG KEE METAL PRODUCTS LTD

中國廣東省東莞市常平鎮橋邊管理區 郵編 : 523586
Qiaoping Ind. Area, Changping, Dongguan, Guangdong, China 523586
電話 Tel : (86) 0769-333 4599 傳真 Fax : (86) 0769-333 4646

龍記鋼材製品(廣州保稅區)有限公司
LUNG KEE STEEL PRODUCTS
(GUANGZHOU FREE TRADE ZONE) CO LTD

中國廣東省廣州市廣州保稅區東江大道459號 郵編 : 510730
No.459 Dong Jiang Dadao (Guangzhou Free Trade Zone)
Guangzhou, Guangdong, China 510730
電話 Tel : (86) 020-8222 2895 傳真 Fax : (86) 020-8222 2897

上海龍記金屬制品有限公司 (Shanghai Factory, PRC)
SHANGHAI LUNG KEE METAL PRODUCTS CO LTD

中國上海市松江工業區新橋分區民益路68號 郵編 : 201612
No.68 Min Yi Road, Xinqiao Section, Songjiang Ind. District
Shanghai, China 201612
電話 Tel : (86) 021-5768 6371 傳真 Fax : (86) 021-5768 6375

台州龍記金屬制品有限公司 (Taizhou Factory, PRC)
TAIZHOU LUNG KEE METAL PRODUCTS LTD

台州經濟開發區靖五路296號 郵編 : 318000
No.296 Weiwu Road, Taizhou Economic Development Zone
Zhejiang, China 318000
電話 Tel : (86) 0576-852 2888 傳真 Fax : (86) 0576-850 5366

馬來西亞辦事處 (Malaysia Office and Factory)
LUNG KEE METAL (MALAYSIA) SDN. BHD

Lot 825 (1 & 2A), Jalan SS13/1K, Kawasan Perindustrian Subang Jaya
47500 Petaling Jaya, Selangor Darul Ehsan, Malaysia
電話 Tel : (6) 03-5633 9862 傳真 Fax : (6) 03-5633 2659
電子郵件 E-mail : lkm@lkm.my

日本辦事處 (Japan Office and Factory)
LUNG KEE METAL JAPAN CO LTD
ルンキーメタルジャパン株式会社

〒130-0026 日本国東京都墨田区尚陽2丁目16番5号 あつまビル8階
8/F, Atsuma Building, 16-5, Ryogoku 2-Chome, Sumida-Ku
Tokyo, Japan 130-0026
電話 Tel : (81) 03-5625 5020 傳真 Fax : (81) 03-5625 5021
日本国群馬県邑楽郡大泉町吉田914-1
914-1 Yoshida, Oizumi-machi, Oira-gun, Gunma-ken, Japan 370-0523
電話 Tel : (81) 0276-20 3900 傳真 Fax : (81) 0276-20 3901
電子郵件 E-mail : lkmsales@lkmj.co.jp

新加坡辦事處 (Singapore Office)
LUNG KEE METAL (SINGAPORE) PTE LTD

240 Macpherson Road, #06-01A Pines Industrial Building, Singapore 348574
電話 Tel : (65) 6741 0506 傳真 Fax : (65) 6741 1167
電子郵件 E-mail : lkmsin@singnet.com.sg

台灣工場 (Taiwan Office and Factory)
仕霸工業股份有限公司
TAIWAN SUPERTech INDUSTRIAL CO LTD

台灣台中縣大雅鄉民生路3段267巷28號
No.28 Lane 267, Sec. 3, Min Sheng Rd., Ta Ya Hsiang
Taichung Hsien, Taiwan
電話 Tel : (886) 04-2568 1155 傳真 Fax : (886) 04-2568 1160
電子郵件 E-mail : tsales@lkm-taiwan.com.tw / ts-taichung@mail.moldbase.com.tw

Local Distributor